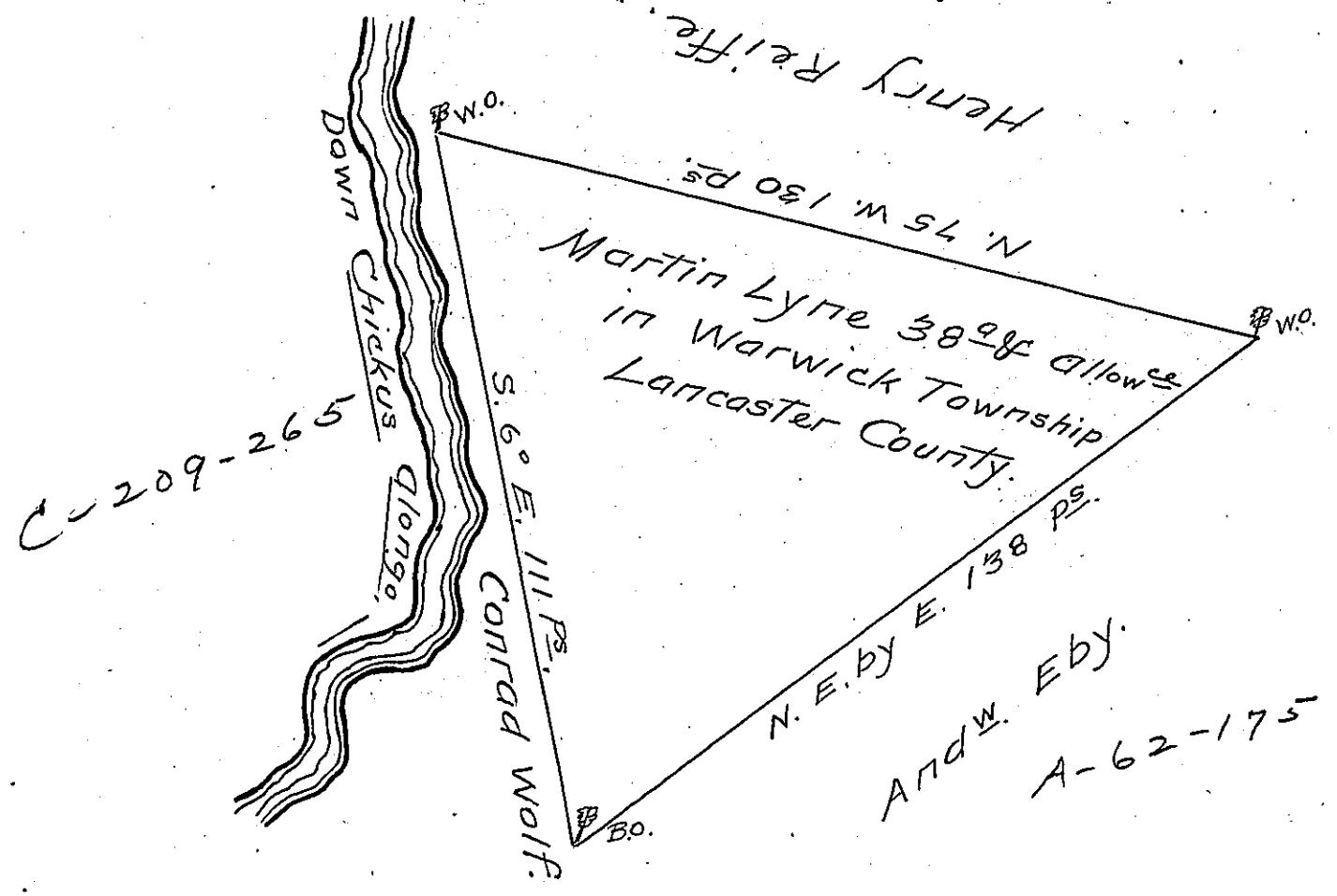


Pat. A-8-48



A Draught of Martin Lynes land Situate
 in Warwick Township in the County of Lancaster
 Containing Thirty Eight Acres and the Allowance
 of Six acres & Cent. for Roads & Highways. By
 Virtue of the Hon'ble the Proprietors Warrant
 Dated the 27th day of February 1752 Survey'd
 the 31st day of March 1752.

Theo. Cookson
 D.S.

To Nicholas Scull Esq.,
 Surveyor General

IN TESTIMONY that the above is a copy of the original remaining on file in
 the Department of Internal Affairs of Pennsylvania, made
 conformably to an Act of Assembly approved the 16th day of
 February, 1833, I have hereunto set my Hand and caused
 the Seal of said Department to be affixed at Harrisburg,
 this eighth day of August 1905.

Isaac R. Brown
 Secretary of Internal Affairs.